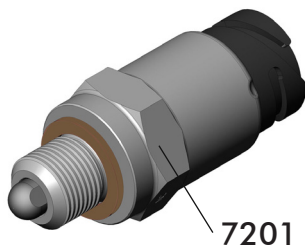


**DIN 72585**

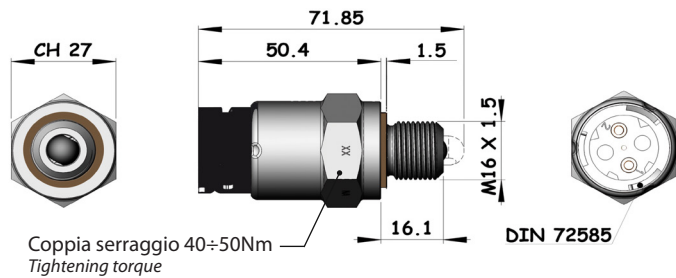
- Interruttore meccanico a puntale da utilizzarsi unicamente
  - con carico max. sui contatti: 5A lampada a 12V / 3A a 24V
  - oppure con carico minimo sui contatti: 50 / 150 mA carico resistivo 12V / 24V
- Interruttore NON idoneo per impiego in ambiente con pressione.
- Tenuta lato connettore DIN 72585: IP64K e IPX9K secondo NORMA DIN 40050 pat. 9 e NORMA CEI EN 60529.

- *Mechanical push button switch only to be used*
  - *with max load on contacts: 5A bulb at 12V / 3A at 24V*
  - *or with minimum load on the contacts: 50 / 150 mA resistive load 12V / 24V*
- *Switch NOT suitable for use in pressurised environments.*
- *Socket connector DIN 72585: IP64K and IPX9K in accordance with DIN 40050 pat.9 and CEI EN 60529 standards.*

**31100100125** Contatto / Contact  
Normalmente chiuso / Normally closed



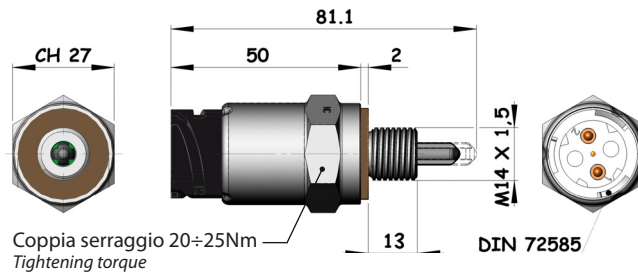
7201



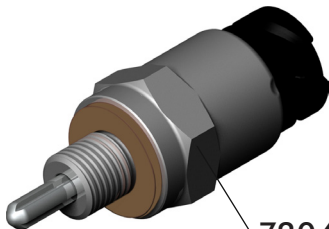
**31100100170** Contatto / Contact  
Normalmente chiuso / Normally closed



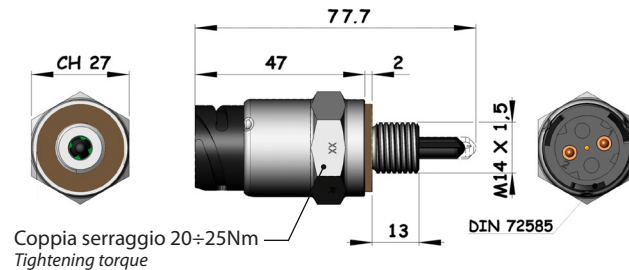
7206



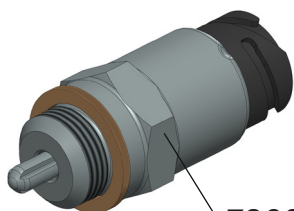
**31100100189** Contatto / Contact  
Normalmente aperto / Normally open



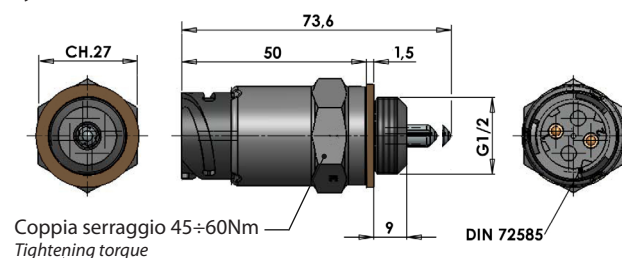
7204



**31100100198** Contatto / Contact  
Normalmente chiuso / Normally closed

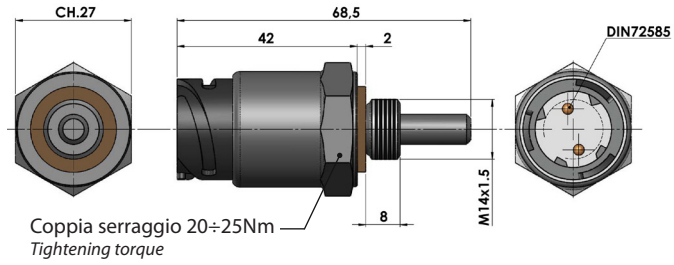
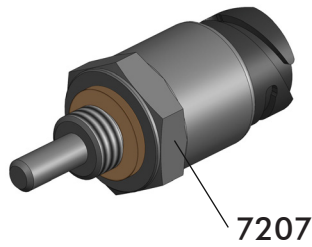


7208



**31100100205**

**Contatto / Contact**  
Normalmente aperto / *Normally open*



**30600101518**

**Cablaggio per interruttore DIN 72585 - L = 6 m**  
*Harness for DIN 72585 switch - L = 6 m*



**Packard (AMP superseal 1,5 series)**

- Interruttore meccanico a puntale da utilizzarsi unicamente con carico max. sui contatti:

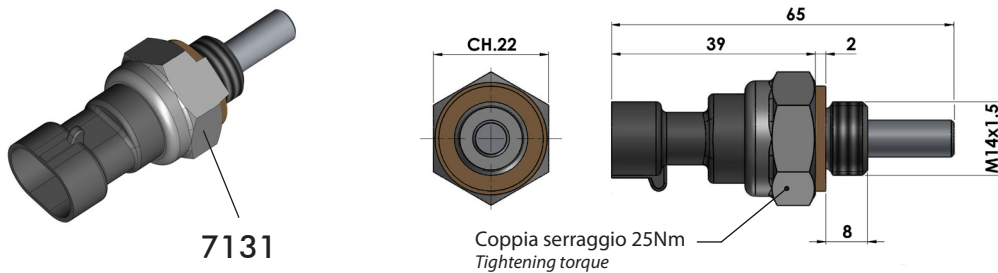
- 3W lampada
- Tensione 12V - 24V
- Temperatura di esercizio: -25°C +80°C

- Mechanical push button switch only to be used with max load on contacts:

- 3W bulb
- Voltage 12V - 24V
- Working temperature: -25°C +80°C

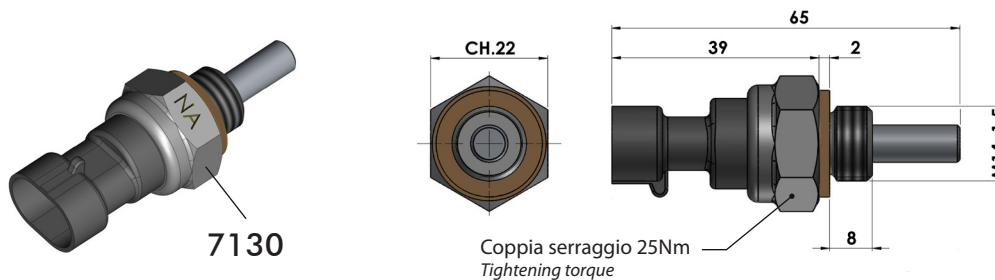
**31100100107** Contatto / Contact  
Normalmente chiuso / Normally closed

- Interruttore NON idoneo per impiego in ambiente con pressione.  
- Switch NOT suitable for use in pressurised environments.



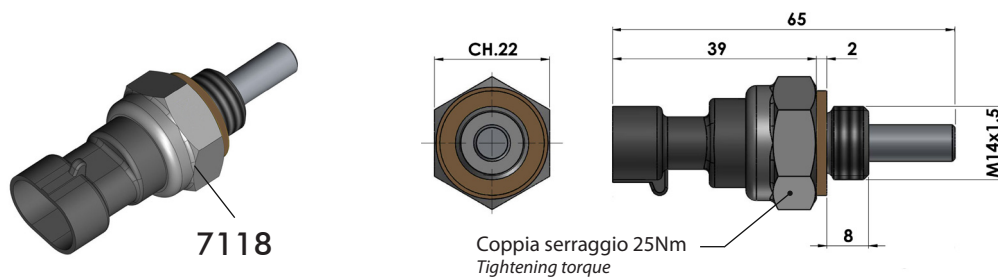
**31100100116** Contatto / Contact  
Normalmente aperto / Normally open

- Interruttore NON idoneo per impiego in ambiente con pressione.  
- Switch NOT suitable for use in pressurised environments.



**31100100081** Contatto / Contact  
Normalmente chiuso / Normally closed

**ALTA PRESSIONE / HIGH PRESSURE: MAX. 12,5 bar**



**30600300106**

Cablaggio per interruttore con connettore AMP-Packard L = 4 m  
*Harness for AMP-Packard switch - L = 4 m*



\* Codice per ricambio - Fornito di serie con le PTO che montano interruttore Packard  
\* *Spare part code - Already Supplied with PTOs which requires Packard switch*